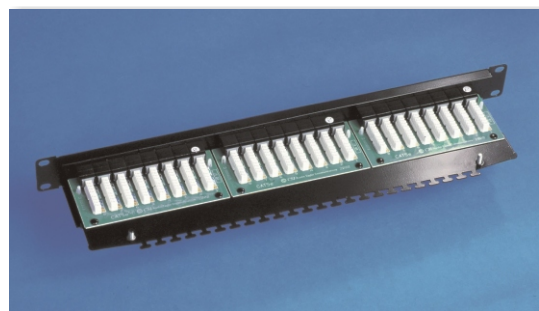


## Category 5e Patch Panels

Part of a wide range of structured cabling products, these Category 5e patch panels may be used with matching Category 5e linejacks or as discrete components.

All versions feature a robust, high quality metal construction and have integral cable management which provides a quick fit cable tie fixing point for each port.

The panels use Krone style IDC connections which are colour coded to T568B.



Rear of 24 port patch panel showing IDC connections, colour coding and integral cable management.



Each panel is supplied with a fixing and earthing kit and has a write-on area for individual port identification. An optional lidded version is available with clip-on lid to protect the IDC connectors from dust or disturbance.

### Technical Summary

Dimensions	Standard 19" rackmount, 1U high
Colour	Black semi-gloss
Wire termination	Krone style IDC - colour coded to 568B
Cable management	Quick fit cable tie fixing point per port
RJ45 sockets	8 position, 8 contact socket Gold plated contacts
Accessories	Supplied with cable ties, 4 cagenuts and fixing bolts plus earthing kit
Labelling	White write-on labelling area above each port

### Ordering Information

Description	Part No.	Carton Multiple
Category 5e Patch Panel (with lid)	9PAN203153	10
Category 5e Patch Panel (without lid)	9PAN203151	10

Austin Taylor Communications Ltd  
Bethesda, Gwynedd, LL57 3BX, UK

A subsidiary of  
Communications Systems Inc.

UK Tel: 01248 602555  
UK Fax: 01248 600370

Int. Tel: +44 1248 602555  
Int. Fax: +44 1248 600370

<http://www.austin-taylor.co.uk>



BS EN ISO 9001  
Reg No: Q5117