

NTE5 / CTE5 Network Termination Units

The NTE5 and CTE5 are industry standard network termination units. They are fitted inside customer premises and offer a demarcation point between network and customer wiring.

Using a removable lower cover, customers extension wiring can easily be isolated from the telephone network facilitating fault location.

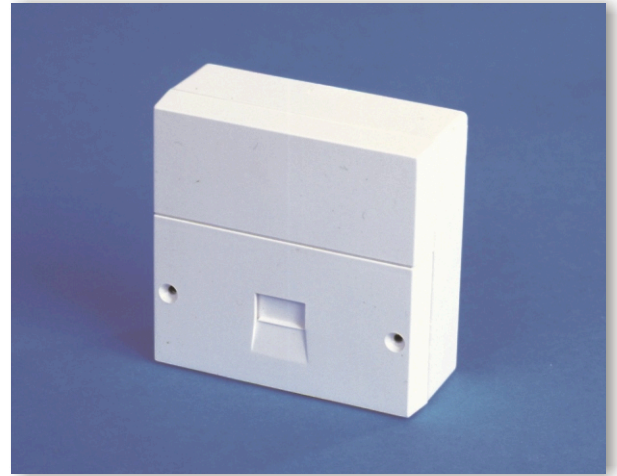
The NTE5 & CTE5 are supplied as standard with full BT style PSTN mastering i.e. with ring capacitor, surge arrestor and opt out of service resistor.



NTE5 with user access cover removed showing test socket in base and connection point for customer extension wiring in cover

The NTE5 and the CTE5 differ in the method of connecting the network provider's cable.

The NTE5 uses two heavy duty screw terminals suitable for large diameter drop wire. The CTE5 uses Krone style IDC connections suitable for smaller diameter (up to 0.65mm) conductors as found in, for example, CATV style hybrid coax/telephony (siamese) cable.



The NTE5 / CTE5 can be surface mounted using the backbox provided or flush mounted in any standard single gang (BS3662 size UA1) wallbox.

Cable entry points are provided in the top, bottom and sides. Knock-outs in the rear of the backbox give additional flexibility in cable/wiring entry and exit.

Technical Summary

Dimensions	86mm x 86mm x 36mm
Colour	Bright white (BT 1P)
Enclosure material	ABS
Network termination	NTE5 - Screw terminal CTE5 - Krone style IDC
Consumer wiring connections	Krone style IDC
Sockets	601 style bottom entry with body made from polyester to UL94 V0. Manufactured to BT specification D2902 and BS6312. The sockets are BAPT approved to no. NS/2197/123/600001
Printed circuit boards	Composite epoxy material (CEM1) substrate (1.6mm thick) with copper laminate 1oz to UL94 V0. Track widths and clearances are 1mm minimum.
Mastering components	Ring capacitor - 1.8uF Resistor 470KOhm Surge arrestor - Type 26A

Ordering Information

Description	Part No.	Carton Multiple
NTE5A network termination unit	9LJ1982001	200
CTE5A network termination unit	9LJ1982003	200

Austin Taylor Communications Ltd
Bethesda, Gwynedd, LL57 3BX, UK

A subsidiary of
Communications Systems Inc.

UK Tel: 01248 602555
UK Fax: 01248 600370

Int. Tel: +44 1248 602555
Int. Fax: +44 1248 600370

<http://www.austin-taylor.co.uk>



BS EN ISO 9001
Reg No: Q5117